

SECTION II

2  
3 THRU 9

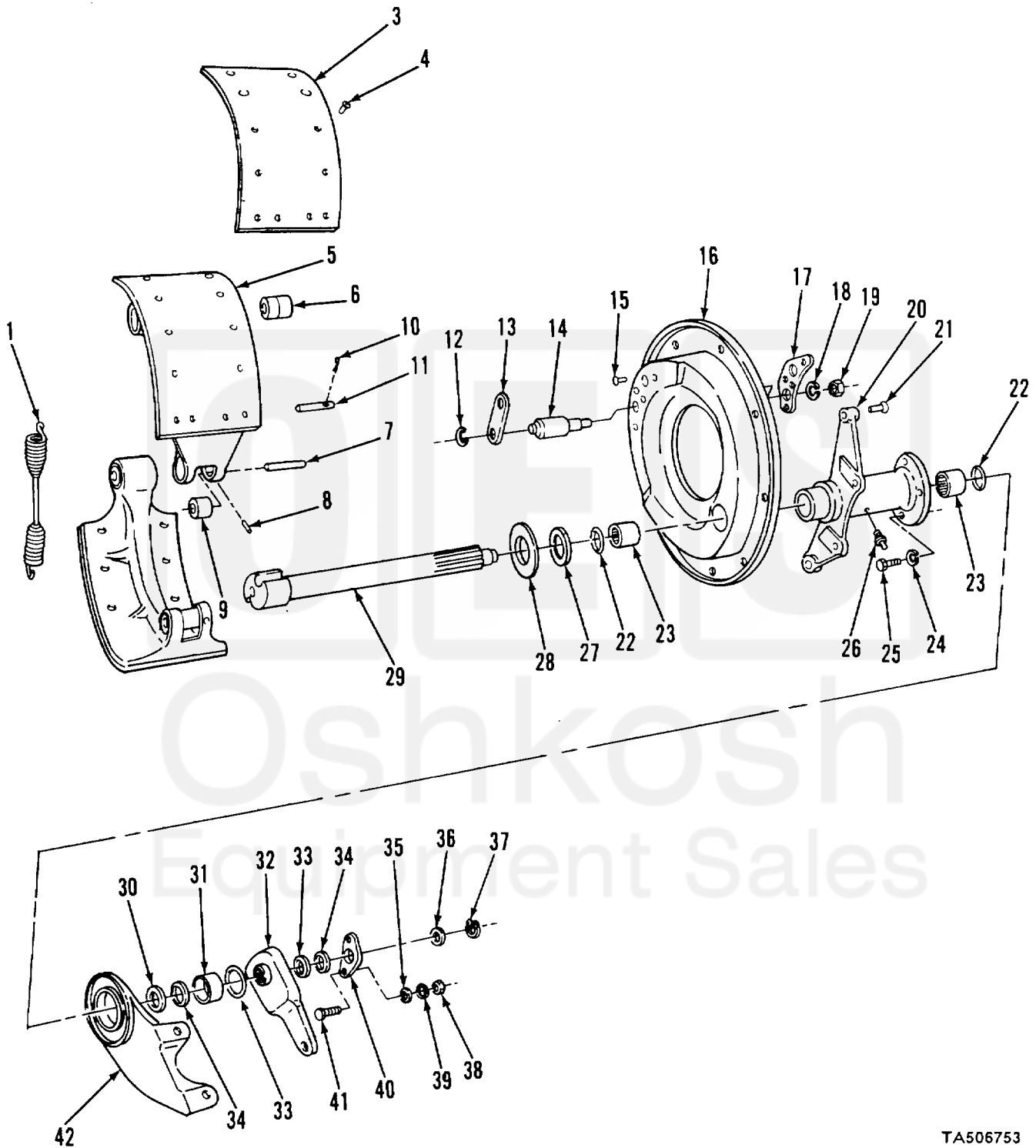


FIGURE 5. BRAKES (M197 AND M198).

TA506753

SECTION II

TM 9-2330-203-14&P

(1) ITEM NO	(2) SMR CODE	(3) CAGEC	(4) PART NUMBER	(5) DESCRIPTION AND USABLE ON CODES (UOC)	(6) QTY
GROUP 12 BRAKES					
GROUP 1202 SERVICE BRAKES					
FIG. 5 BRAKES (M197 AND M198)					
1	PAOZZ	19207	7979339	SPRING, HELICAL, EXTE..... UOC: 842, 843	1
1	PAOZZ	19207	7409383	SPRING, HELICAL, EXTE..... UOC: 842,843	1
2	PAOFF	78500	A1-3722B28	BRAKE SHOE WITH LINING ..... UOC: 842,.843	4
3	PAFZZ	19207	7979277	LINING, FRICTION PART OF KIT P/N..... 8720226 .....	2
4	PAFZZ	96906	MS16536-172	UOC:842, 843 RIVET, TUBULAR.....	20
5	XAFZZ	19207	7979279	UOC: 842, 843 BRAKE SHOE.....	1
6	PAFZZ	19207	7409567	UOC: 842, 843 BUSHING, SLEEVE.....	1
7	XAFZZ	19207	7534847	UOC: 842, 843 PIN, STRAIGHT .....	1
8	PAFZZ	96906	MS51019-65	UOC: 842, 843 SETSCREW .....	1
9	XAFZZ	19207	7934846	UOC :842, 843 ROLLER.....	1
10	PAFZZ	96906	M524665-283	UOC:842, 843 PIN, COTTER .....	2
11	PAFZZ	19207	7409379	UOC: 842,.843 PIN, GROOVED, HEADLES.....	2
12	PAOZZ	19207	7696584	UOC 842, 843 WASHER, SLOTTED .....	2
13	XBOZZ	19207	7409384	UOC: 842,.843 STRAP .....	1
14	PAOZZ	78500	7979271	UOC: 842, .843 PIN.SHOULDER, HEADLE.....	2
15	PAOZZ	96906	MS35743-76	UOC: 842,843 RIVET, SOLID.....	4
16	PFOZZ	19207	7979336	UOC: 842, 843 PLATE, BACKNG, BRAKE .....	1
17	PFOZZ	192C7	7979334	UOC: 842, 843 BRACKET, ANCHOR PIN .....	1
18	PAOZZ	96906	MS35338-51	UOC: 842, 843 WASHER, LOCK .....	2
19	XBOZZ	78500	72782	UOC: 842, 843 NUT, PLAIN, HEXAGON .....	2
20	XBOZZ	19207	7979335	UCC: 842, 843 BRACKET .....	1
21	XDOZZ	19207	7979352	UOC: 842, 843 RIVET .....	4
22	PAOZZ	19207	7979333	UOC: 842, 843 SEAL, PLAIN ENCASED .....	2

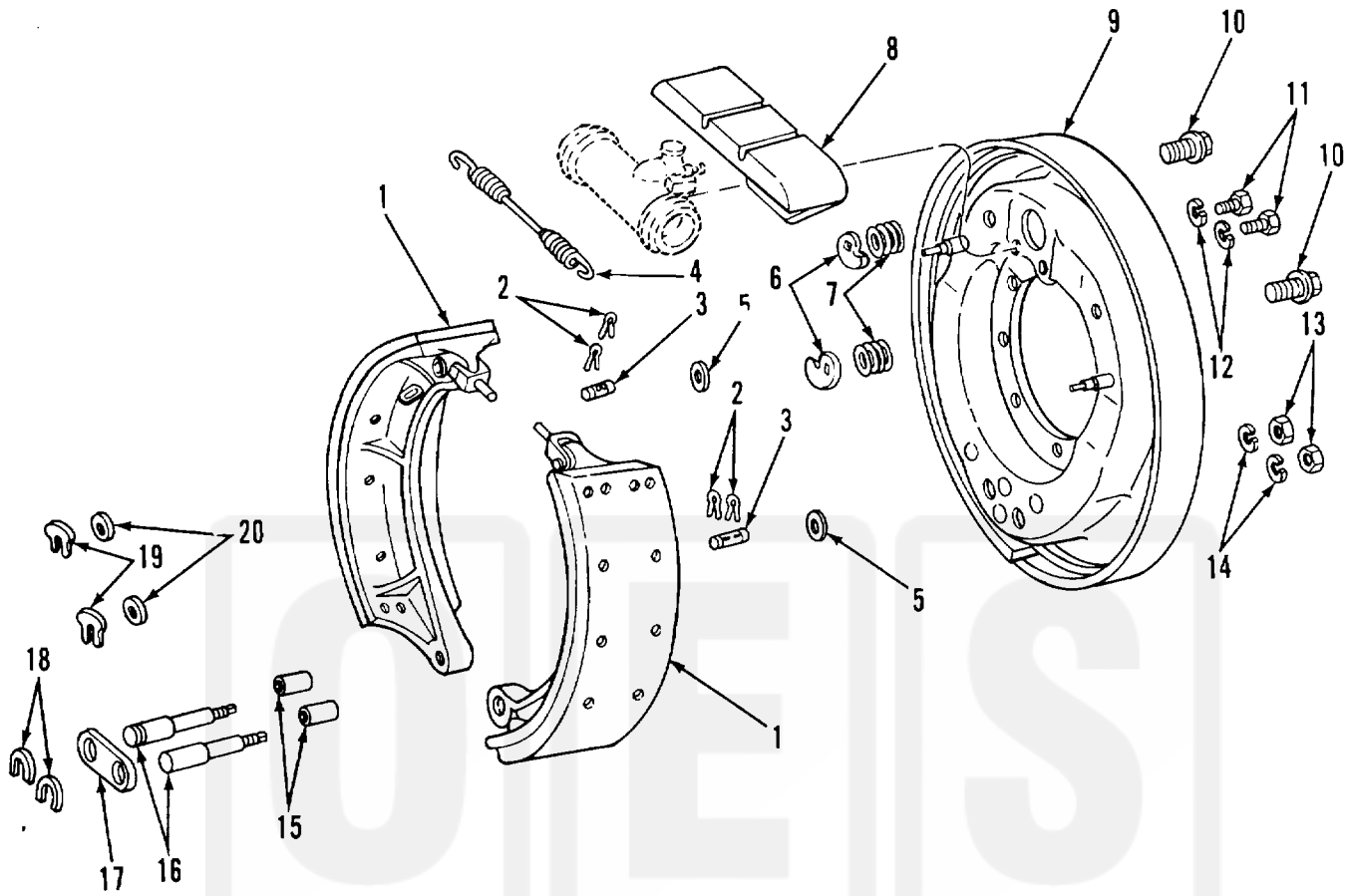


FIGURE 7. SERVICE BRAKE ASSEMBLY (M197A1 AND M198A1, LATE MODELS).

TA506755

SECTION II				TM 9-2330-203-14&P	
(1)	(2)	(3)	(4)	(5)	(6)
ITEM	SMR		PART		
NO	CODE	CAGEC	NUMBER	DESCRIPTION AND USABLE ON CODES (UOC)	QTY
GROUP 1202 SERVICE BRAKES					
FIG. 7 SERVICE BRAKE ASSEMBLY (M197A1 AND M198A1. LATE MODELS)					
1	PAOZZ	19207	7409380	SHOE LATE MODELS..... UOC: 152, .844	2
2	PAOZZ	96906	MS244665-283	PIN, COTTER LATE MODELS..... UOC: 152.844	2
3	PAOZZ	19207	7979330	PIN, GROOVED.HEADLES LATE MODELS..... UOC: 152.844	2
4	PAOZZ	19207	7979339	SPRING.HELICAL, EXTE LATE MODELS..... UOC:152.844	1
5	PAOZZ	19207	7409385	WASHER, SPRING TENSI LATE MODELS ..... UOC: 152.844	2
6	PAOZZ	23862	2003399	CAM, BRAKE ADJUSTING LATE MODELS ..... UOC: 152, 844	2
7	PAOZZ	78500	275803	SPRING.HELICAL.COMP LATE MODELS ..... UOC:152, 844	2
8	PAOZZ	78500	2797E5	COVER, ACCESS LATE MODELS ..... UOC:152, 844	1
9	PAOZZ	78500	A13736H8	PLATE, BACKING, BRAKE LATE MODELS..... UOC: 152.844	1
10	PAOZZ	19207	7409376	PIN, SHOULDER, HEADED LATE MODELS..... UOC: 152.844	2
11	PAOZZ	96906	MS90725-59	SCREW, CAP, HEXAGCN LATE MODELS ..... UOC :152, 844	2
12	PAOZZ	12603	23E06	WASHER, LOCK LATE MODELS ..... UOC: 152, 844	2
13	PAOZZ	19207	7207919	NUT, PLAIN, HEXAGON LATE MODELS..... UOC: 152, 844	2
14	PAOZZ	96906	MS35338-51	WASHER, .LOCK LATE MODELS ..... UOC: 152, 844	2
15	PAOZZ	19207	7409567	BUSHING, SLEEVE..... UOC: 152, 844	2
16	PAOZZ	78500	7979271	PIN, SHOULDER, HEADLE LATE MODELS ..... UOC: 152, 844	2
17	PAOZZ	78500	1745-E-5	LINK, ANCHOR.BRAKE LATE MODELS..... UOC:152, 844	2
18	PAOZZ	19207	7979332	WASHER,.SLOTTED LATE MODELS ..... UOC: 152, 844	2
19	PAOZZ	78500	1229-216	WASHER LATE MODELS..... UOC:152,844	8
20	XDOZZ	19207	594261	WASHER, FLAT LATE MODELS ..... UOC: 152, 844	2

END OF FIGURE